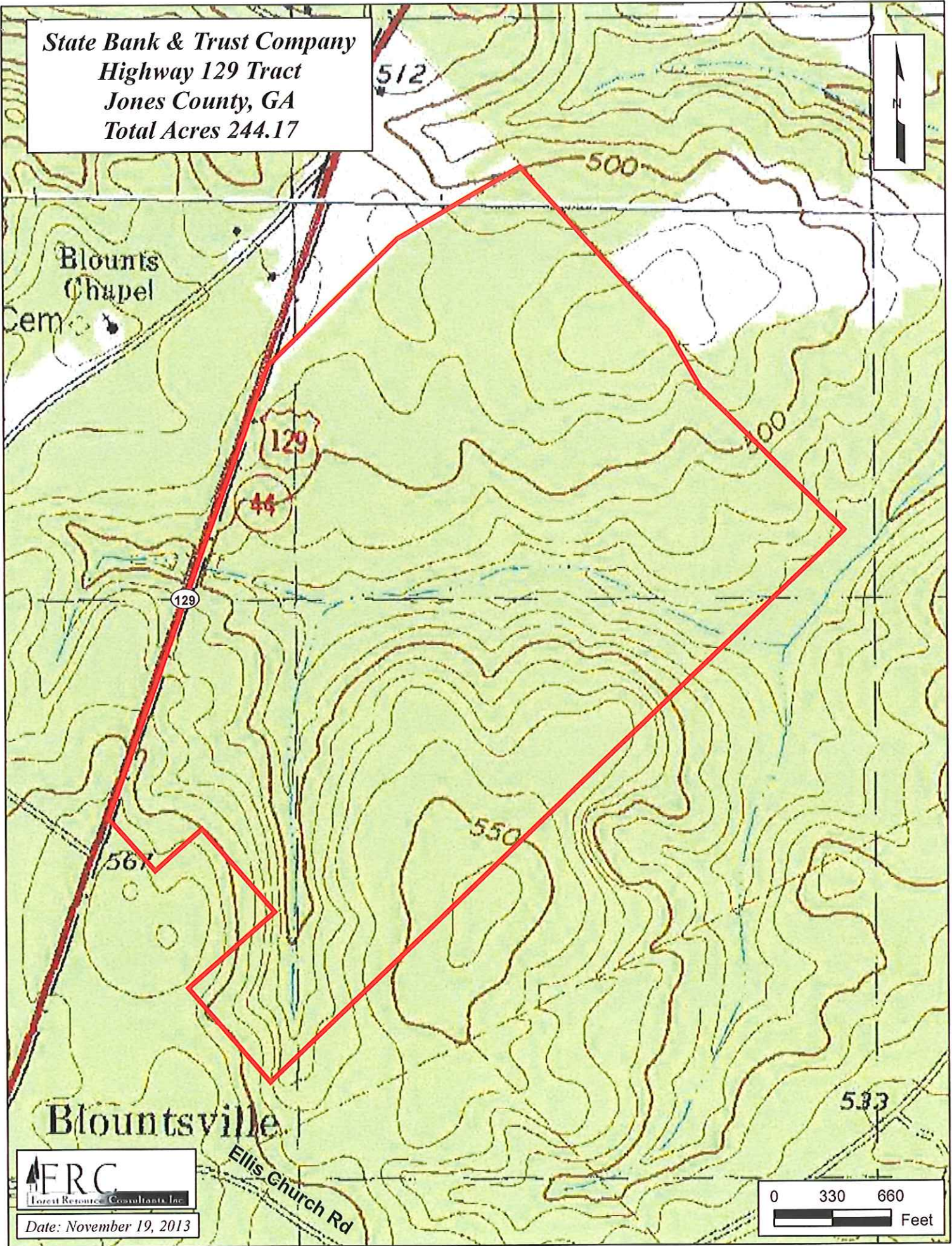
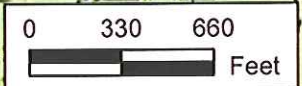


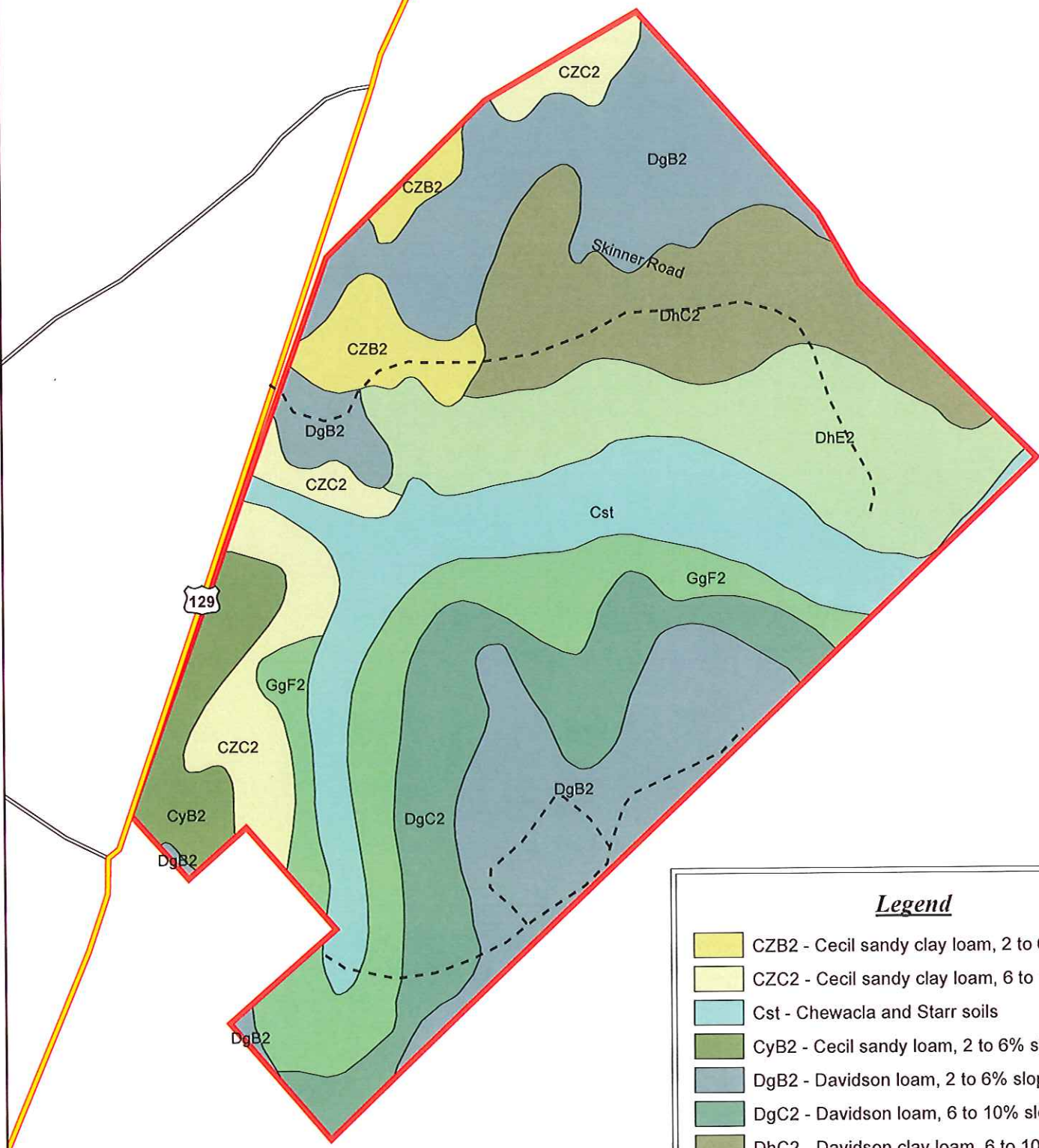
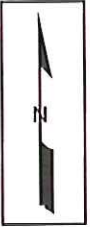
*State Bank & Trust Company
Highway 129 Tract
Jones County, GA
Total Acres 244.17*









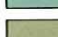


Date: November 19, 2013

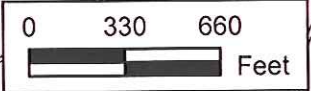


**State Bank & Trust Company
Highway 129 Tract
Jones County, GA
Total Acres 277.17**

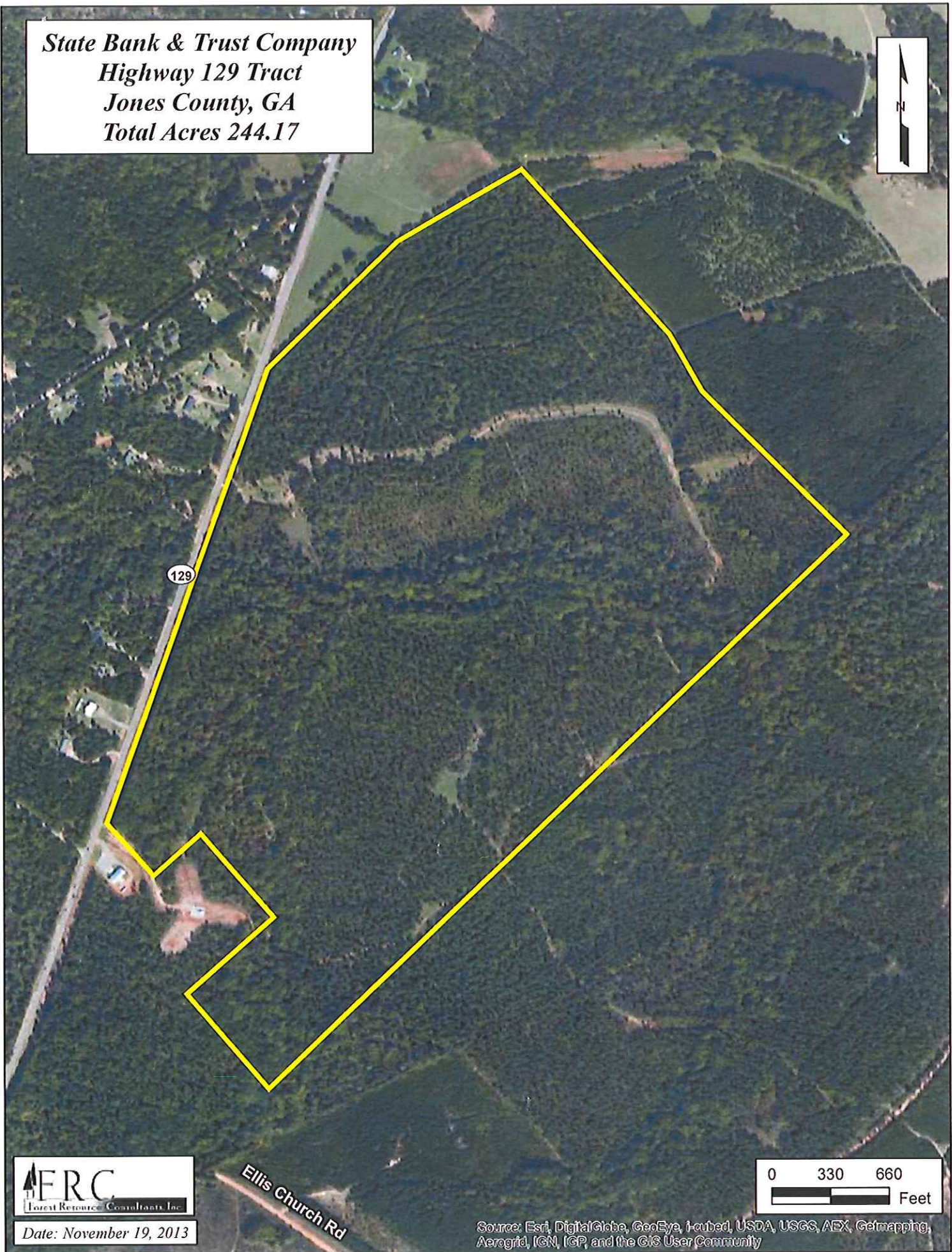


Legend

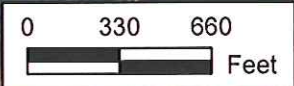
	CZB2 - Cecil sandy clay loam, 2 to 6% slopes
	CZC2 - Cecil sandy clay loam, 6 to 10% slopes
	Cst - Chewacla and Starr soils
	CyB2 - Cecil sandy loam, 2 to 6% slopes
	DgB2 - Davidson loam, 2 to 6% slopes
	DgC2 - Davidson loam, 6 to 10% slopes
	DhC2 - Davidson clay loam, 6 to 10% slopes
	DhE2 - Davidson clay loam, 10 to 25% slopes
	GgF2 - Gwinnett loam, 15 to 35% slopes



*State Bank & Trust Company
Highway 129 Tract
Jones County, GA
Total Acres 244.17*

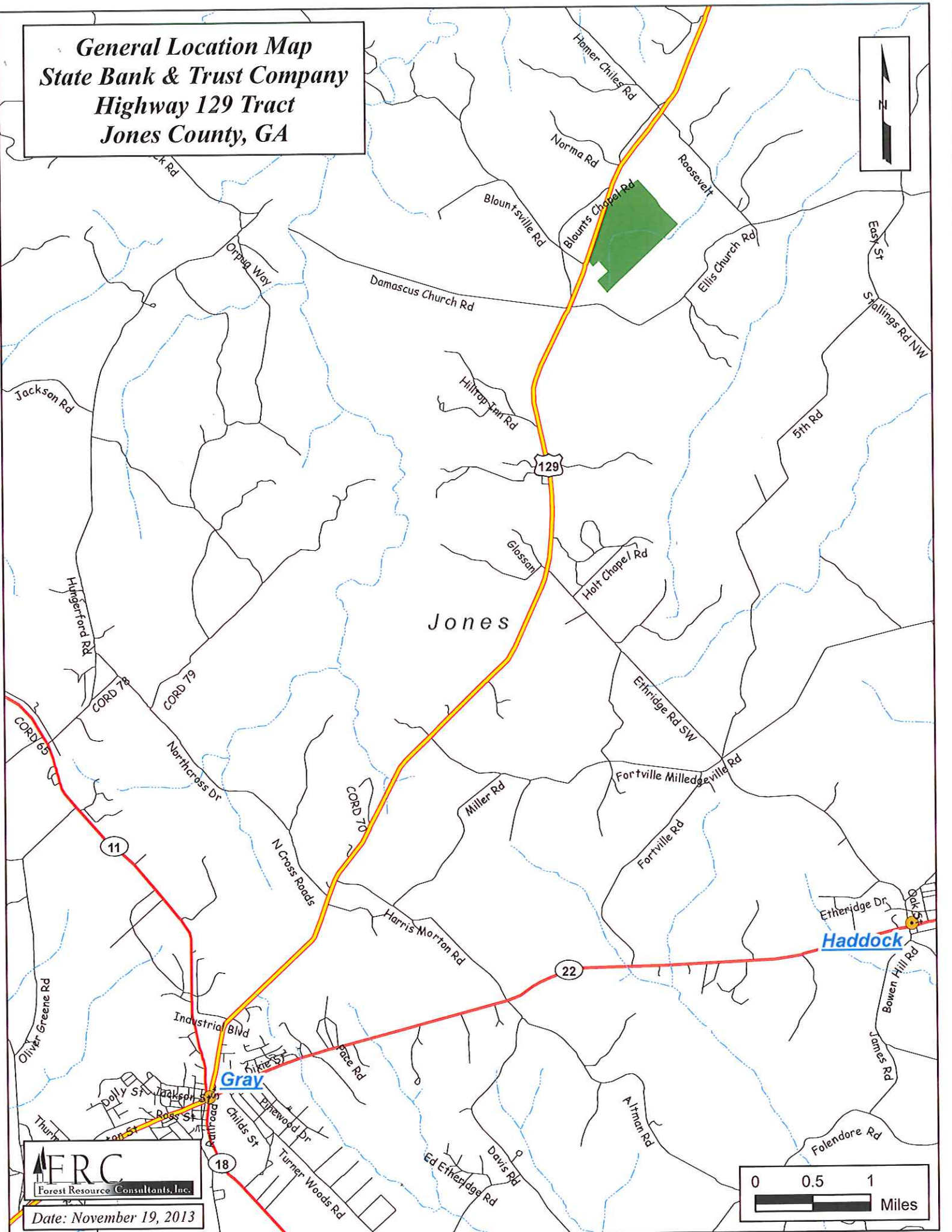


Date: November 19, 2013



Source: Esri, DigitalGlobe, GeoEye, i-cubed, USDA, USGS, AEX, Getmapping, Aerogrid, IGN, IGP, and the GIS User Community

**General Location Map
State Bank & Trust Company
Highway 129 Tract
Jones County, GA**



FERC
Forest Resource Consultants, Inc.
Date: November 19, 2013

