

offer. "All sales are subject to Investment Committee approval & also Seller approval prior to contract execution."

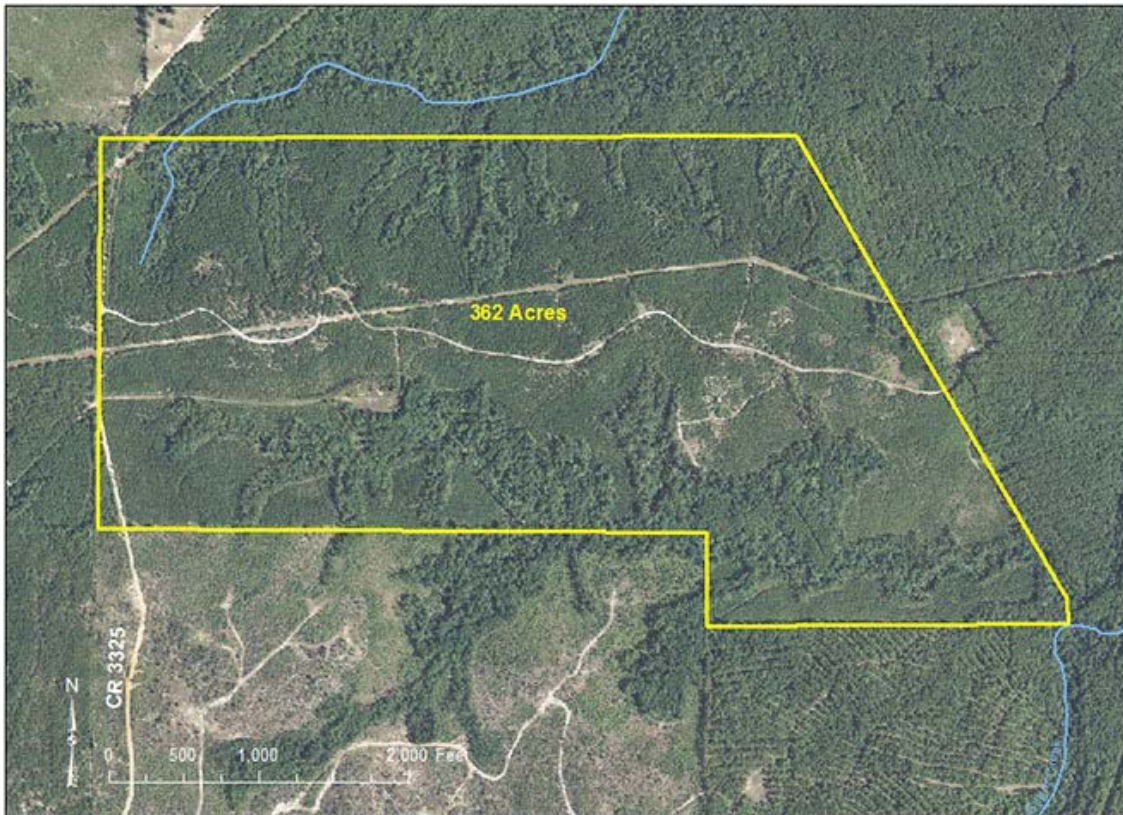
CONTACT:

[Andy Flack](#), Broker
[Karen Stout](#), Broker Assoc.
HomeLand Properties, Inc.
1600 Normal Park
Huntsville, TX 77340
936-295-2500 Office
936-295-9574 Fax
www.homelandproperties.com
Email: andy@homelandprop.com or karen@homelandprop.com

*5% earnest money required.

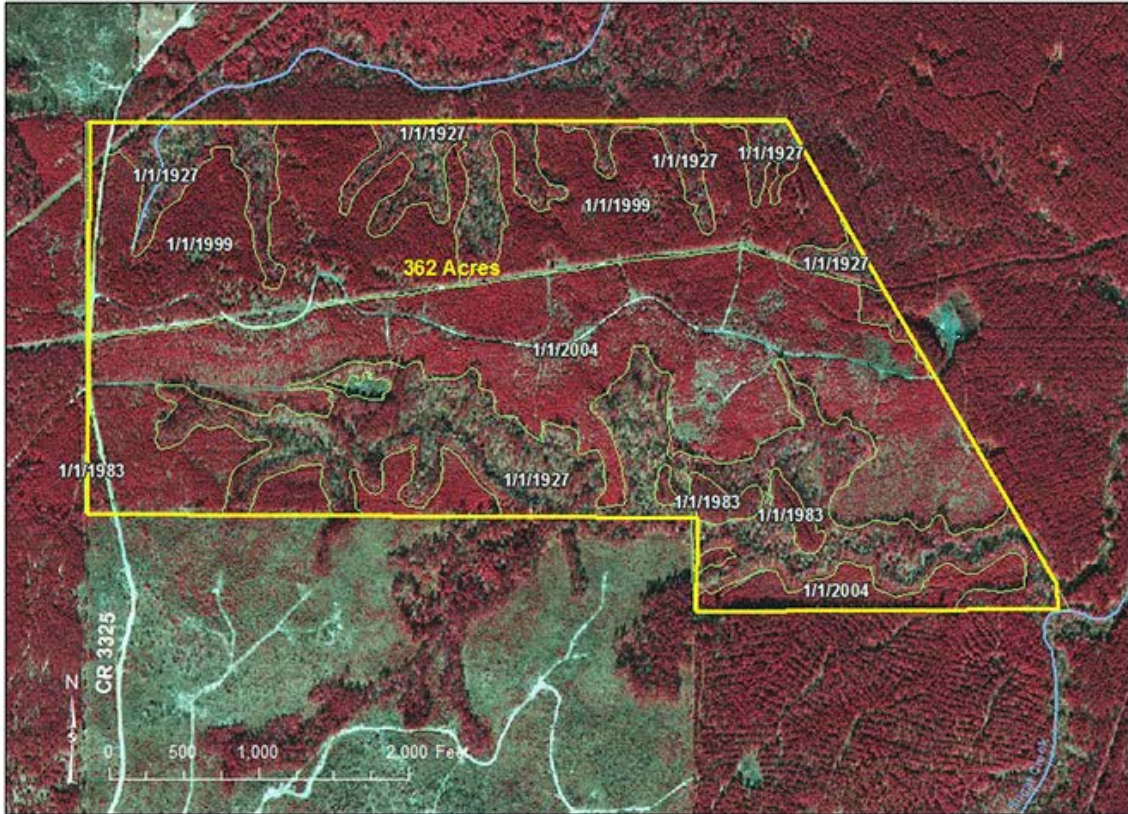
*The information contained herein is from sources deemed reliable but is not guaranteed by HomeLand Properties, Inc. The offerings are subject to change in price, errors, omissions, prior sales or withdrawal without notice. Acreage size and dimensions are approximate. Licensed co-brokers are welcome to show this property by advance appointment and will receive a co-broker fee if the co-broker accompanies their buyer from the first contact to the closing of a sale.

Aerial
(Click to enlarge)

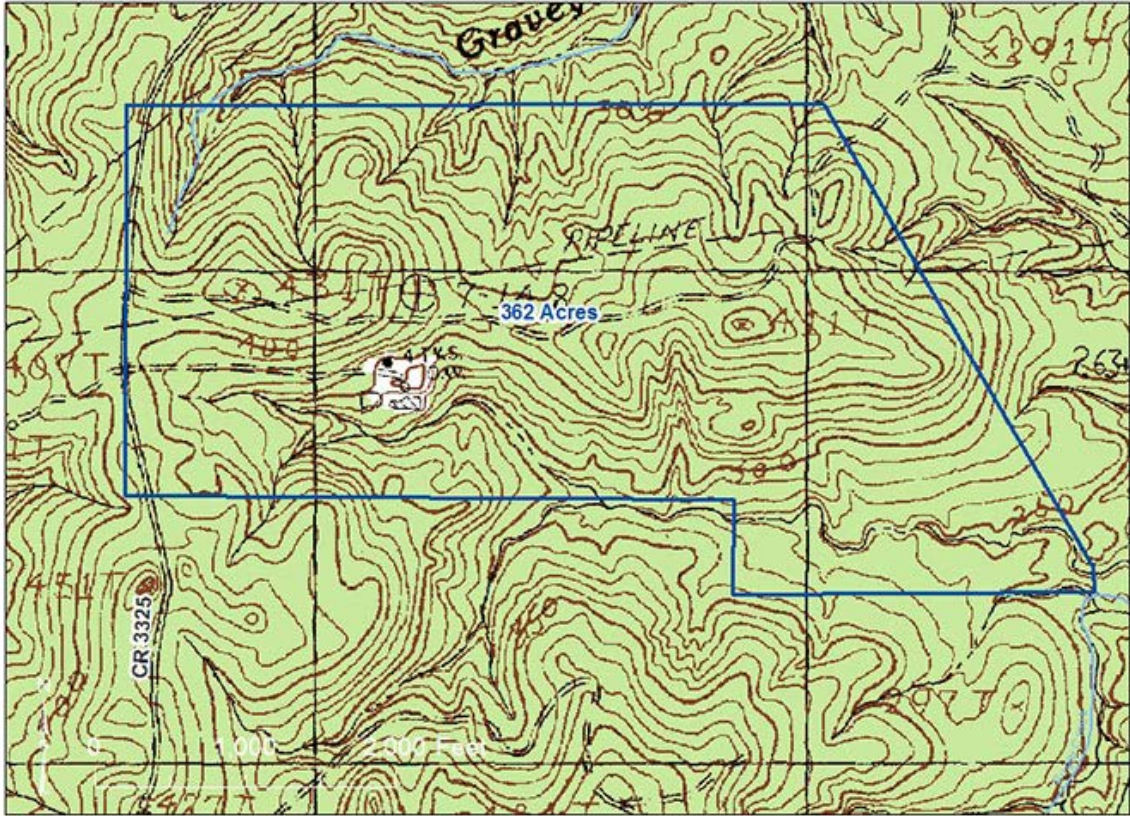


Infrared

*Featuring Timber Established Year
(Click to enlarge)



Topo
(Click to enlarge)



Location Maps





